

BUCKINGHAMSHIRE DOMESTIC ABUSE STRATEGY

2018 - 2021

The background of the cover features a dark blue horizontal band at the top. Below this, the lower half of the page is filled with large, overlapping circles in various shades of green and light blue, creating a modern, abstract design.

CONTENTS

Foreword	3
Strategic Summary - Vision, Aims and Outcomes	4
Prevent, Support, Protect, Recovery	6
What is Domestic Abuse?	8
What is Known to Work?	8
Domestic Abuse - the Impact	9
The National Picture	10
Buckinghamshire's Picture of Domestic Abuse	11
Cost Saving Through Intervention	12
Strategic Overview in Buckinghamshire	12
Principles	14
Key Actions to Deliver Strategy:	
Prevent Delivery Plan	15
Support Delivery Plan	16
Protect Delivery Plan	17
Recovery Delivery Plan	18
Glossary	19

FOREWORD



ACC Nicola Ross, Chair of the Safer & Stronger Bucks Partnership Board .

Domestic abuse can happen to anyone and anyone can commit abuse. It can happen to women and men, in same-sex and heterosexual couples, among all occupational groups. We are committed to working with all our partners to achieve the best possible outcomes for victims and their children. We endeavour to ensure that domestic violence and abuse is given a high profile to maintain the focus required to continue to make the progress for all impacted in Buckinghamshire. Our vision is that “everyone in Buckinghamshire lives a life free from domestic abuse” and we will do our best to help achieve it.



Fran Gosling-Thomas, Independent Chair of the Bucks Safeguarding Children's Board

Whether children witness or experience abuse, it can take a significant toll on their development. This three year strategy seeks to further establish earlier intervention and deliver healthy relationships not only in the secondary school setting, but in primary schools. We want to build on previous work with all partners to effectively combat domestic abuse and limit the adverse consequences it has on the lives of our young people in Buckinghamshire.



Marie Seaton, Chair of the Bucks Safeguarding Adult's Board

The impact of domestic abuse upon our community is catastrophic. Domestic abuse survivors and their children can face ongoing and challenging affects after enduring physical, mental, or emotional abuse. It is crucial that all partners work together to ensure that we keep victims and their children safe and hold perpetrators to account for their behaviour.



Councillor Martin Tett, Chair of Health & Wellbeing and Leader of Buckinghamshire County Council

Domestic abuse has a considerable impact on the health and wellbeing of victims and their children. As well as the short term effects of domestic abuse (such as physical injury) there are enormous long term effects on individual's mental health. Over the course of this 3 year strategy partners will continue to work with victims to alleviate their short and long term issues and support them to lead empowered, safer and happier lives.

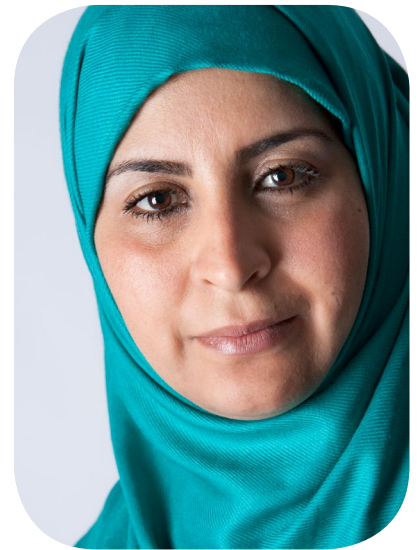
STRATEGIC SUMMARY

Vision, Aims and Outcomes



Our Buckinghamshire Vision

Everyone in
Buckinghamshire lives a life
free from domestic abuse.



Strategic Aims: by working in partnership all agencies will:

1. Help prevent domestic abuse from happening by raising awareness and challenging attitudes and behaviours which foster or tolerate it.
2. Reduce the impact of domestic abuse on children and adults by intervening early.
3. Provide support to victims.
4. Ensure perpetrators are held to account.
5. Reduce the risk of people becoming victims again.

Outcomes: what is the impact we want from this strategy?

1. Education

School age children are made aware of what constitutes a healthy relationship and domestic abuse.

2. Awareness

Increase residents' awareness of domestic abuse so they understand how they can help to report abuse and support victims.

3. Identification

Improve knowledge around risk factors linked to domestic abuse victims, perpetrators and their children to enable early identification by a wide range of frontline practitioners and agencies. (Including knowledge gained from Domestic Homicide Reviews).

4. Safeguarding

Ensure those identified at risk of harm are referred appropriately and receive support to tackle the risk and make them feel safe.

5. Accessible Support

Improved communication on where and how victims can access support when they need it most and which enables them and their children to be safe.

6. Victim's Perspective of Success

Improved health and wellbeing of victims which improves resilience to initiate change.

7. Reporting

Increased reporting of domestic abuse to police and ensuring reports are dealt with appropriately.

8. Increasing Prosecutions

Improve the way evidence is gathered and increase victimless prosecution.

9. Reducing Future Harm

More perpetrators of domestic abuse are supported to change their behaviour (where appropriate), resulting in fewer repeat victims of domestic abuse.

How will we deliver the strategy?

PREVENT

Informing our communities of the indicators of domestic abuse and help available. Raising awareness to children and young people of what constitutes healthy relationships.

SUPPORT

Offering help to victims irrespective of age, gender, culture, sexuality need or their level of risk.

PROTECT

Working with victims to lead safer lives through support services and safeguarding structures as well as protecting them from perpetrators through prosecution, restraining orders or via perpetrator behaviour programmes.

RECOVERY

Helping victims to feel safe and move on to lead happier, more empowered lives.

WE WILL:

Work as a multi-agency partnership with all residents regardless of their age, gender, culture, religion, sexuality to ensure that people can live a life free from domestic abuse. We will do this by developing four strategic delivery strands.

PREVENT



We will give accessible information to residents to develop an understanding about the indicators of domestic abuse and the help available so that those affected can get support when they need it.

We will help schools, services who work with children and young people and parents to spread the message to children and young people of what constitutes healthy relationships so that they understand warning signs including controlling or coercive behaviour for relationships they might be in.

We will work with professionals to help train them about how domestic abuse concerns can be discussed with children, young people and adults to break down barriers around speaking about domestic abuse.

SUPPORT



We will ensure professionals and residents are signposted to support that best meets their needs which could include advice, peer support, counselling or advocacy.

We will work as a partnership to offer support at different places throughout the county and deliver this in a variety of ways such as via; phone support, one to one and in group work environments where natural networks of support can be built.

We will work as a partnership to develop support for children and young people that recognises they can both be a victim of parent/carer domestic abuse as well as being themselves in abusive teenage relationships.

We will work as a partnership to deliver support that is cognisant of individual abilities, language barriers, cultural and gender considerations.

We will work as a partnership to challenge the behaviours of perpetrators and support them to change.

PROTECT

We will work in multi-agency partnership to coordinate our response to keeping high risk victims safe.

We will support the Police in all prosecution efforts including increasing “victimless” prosecutions.



We will offer advice and practical support to improve home security to enable households at risk of domestic abuse the choice to remain safely in their own homes.

We will enable victims and their children to escape their abuser by moving into a confidential refuge to stay temporarily, subject to capacity and safety considerations this accommodation may be out of county.

We will work with victims and their children to create their own safety plans which identifies the actions to be taken to keep them safe and the people they are comfortable speaking to if they have concerns.

We will disseminate to professionals and support services contemporary knowledge and research, including key points from Domestic Homicide Reviews, on how to best support and protect victims.

RECOVERY



We will maintain clear pathways for people to “move on” from confidential refuges to live in a new place of safety.

We will ensure that where a prosecution has been successful, victims receive appropriate and timely communications prior to offender’s release.

We will ensure that perpetrators who are committed to changing their abusive behaviour can access ongoing support to address the causal factors of their behaviour.

WHAT IS DOMESTIC ABUSE?

The cross-government definition of Domestic Abuse (DA) is:

“Any incident or pattern of incidents of controlling, coercive, threatening behaviour, violence or abuse between those aged 16 or over who are, or have been, intimate partners or family members regardless of gender or sexuality. The abuse can encompass, but is not limited to; psychological, physical, sexual, financial and emotional abuse”.

(Home Office, March 2013)

Controlling behaviour is a range of acts designed to make a person subordinate and/or dependent by isolating them from sources of support, exploiting their resources and capacities for personal gain, depriving them of the means needed for independence, resistance and escape and regulating their everyday behaviour.

Coercive behaviour is an act or a pattern of acts of assault, threats, humiliation and intimidation or other abuse that is used to harm, punish, or frighten their victim.

A new law introduced the criminal offence of “controlling or coercive behaviour in an intimate or family relationship” in 2015, however it remains difficult to prove this kind of abuse in court. As theconversation.com states, “Unlike in cases of physical abuse that can leave external bruising or broken bones, it’s difficult for many to assess whether coercive control has taken place. The abuser will typically use signals and covert messages to exert and maintain control and often these have meaning only in the context of that particular relationship”¹.

WHAT IS KNOWN TO WORK WHEN TACKLING DOMESTIC ABUSE?

- **School-based education programmes** that promote healthy relationship have been particularly successful in reducing violence towards current dating partners.
- Community based outcome-oriented **victim support**; needs based and accessible – 57% of 996 cases evaluated saw a cessation of abuse following IDVA involvement.
- **Multiagency coordination** as part of a larger thought out strategy.
- **Training health professionals** to identify abuse can improve disclosure and onward referral. Enquiring at routine and ad hoc appointments can be equally effective, such as at A&E or during routine pregnancy checks.
- **Mandatory DA screening at health facilities** – study showed increased detection between screening in female health services and control group (41% vs 14%).
- **Controlling substance abuse** as part of improving DA (coordinated and joined-up) – reduction in mean number of violent incidents post-combined treatment programme from 6.6 to 0.95 per month.
- **Perpetrator interventions** for all but the most serious DA – Mirabel study on interventions showed sexual violence and violence with weapons decrease from 30% and 29% respectively, to 0% in a 12-month evaluation.

For detail of references to national evidence of what works please refer to the additional information paper.

¹ <http://theconversation.com/why-its-so-hard-to-prosecute-cases-of-coercive-or-controlling-behaviour-66108>

DOMESTIC ABUSE - THE IMPACT ON THE WHOLE COMMUNITY

Anyone can be a victim of domestic abuse and anyone can perpetrate it. Whether committed by family members upon another, or taking place within intimate partner relationships; victims are female and male, whether in heterosexual or same sex relationships and abuse occurs among all occupational groups. Domestic abuse involves any incident of controlling, coercive or threatening behaviour, not just violence or abuse between partners.

Domestic abuse is a largely invisible crime. Although domestic abuse affects both men and women, **female victims** are disproportionately higher and women are more likely to experience repeat incidents. It is often difficult to measure the national picture accurately as women are often reluctant or afraid to report it to the police. Absences from work due to injuries or visits to the doctor often cause them to lose their jobs, making them less able to leave their abusive situations².

Male victims of domestic abuse can often find it difficult to admit what is really happening to them. Many abused men believe that experiencing abuse in some way affects their masculinity or that they are not “real men” if they are suffering. 3,085 men reported being a victim of domestic abuse in 2016. In 1,155 of these cases a woman had been the perpetrator of the violence, 1,930 of these cases being from same sex relationships³. Men have exactly the same rights as women to be safe in their own homes and statutory services have a duty to provide services to all, irrespective of gender and sexuality.

More than 30% of domestic abuse starts in pregnancy, and existing abuse may get worse during pregnancy or after giving birth. It can result in a wide range of impacts on mother and baby including miscarriage, preterm labour, low birthweight, and long lasting physical disability. The impact on the mother includes physical harm, depression, anxiety and post-traumatic stress disorder.

Children who live with domestic abuse are at an increased risk of behavioural problems and emotional trauma, and mental health difficulties in adult life. Not all children who live with domestic abuse will exhibit problems or difficulties either immediately or later in life, but all will be affected in some way.

The abuse experienced by victims who are **Black, Asian or from a minority ethnic group** as well as those who have been refugees can be further complicated by other relevant abusive factors such as forced marriage, or female genital mutilation (FGM). Women from Black, Asian or minority ethnic communities are likely to face additional barriers to receiving the help that they need; the most profound barrier being communication for non-English speakers.

Research shows that 1 in 4 **Lesbian, Gay and Bi-sexual people** will experience domestic abuse along with 80% of the Trans community. Nationally LGBT reporting to the Police is underrepresented due to a number of barriers that include a reluctance to report, confidence in being taken seriously and responses that are insensitive to same sex partners.

² <https://www.healthyplace.com/abuse/domestic-violence/effects-of-domestic-violence-domestic-abuse-on-women-and-children/>

³ <http://www.safedate.org.uk/male-domestic-abuse>

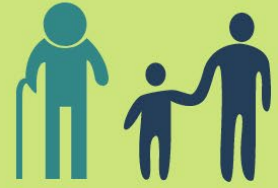
THE NATIONAL PICTURE



1 in 4 women experience domestic abuse in their lifetime ¹



In the year ending March 2016, **1.2 million** women reported experiences of domestic abuse ²



There is hidden victimisation in the over 65's and increasing cases involving parent abuse from their children and against people with a disability ⁴



Domestic abuse claims the lives of around 2 women per week. ⁵



LGBT victims need to feel services cater for them too ⁶

16 - 24

Higher levels of abuse amongst those aged between 16-24 ³



Domestic abuse related crime is 10% of total crime ⁹



Women who have experienced domestic abuse are **fifteen times** more likely to misuse alcohol, **nine times** more likely to misuse drugs, and **five times** more likely to attempt suicide ¹¹



45%

of domestic abuse victims go on to have mental health issues ¹⁰



35%

of households have a second incident within 5 weeks ⁷



^{1&2} <https://www.refuge.org.uk/our-work/forms-of-violence-and-abuse/domestic-violence/domestic-violence-the-facts/>

³ <https://www.ons.gov.uk/peoplepopulationandcommunity/crimeandjustice/compendium/focusonviolentcrimeandsexualoffences/yearendingmarch2015/chapter1overviewofviolentcrimeandsexualoffences>

⁴ www.safelives.org.uk/spotlight-1-older-people-and-domestic-abuse

⁵ Office of National Statistics (2015)

⁶ Bucks LGBT DVA Report (2016)

⁷ <http://www.selfhelpguides.ntw.nhs.uk/devon/leaflets/selfhelp/Domestic%20Violence.pdf>

⁸ www.womensaid.org.uk

¹⁰ <https://www.womensaid.org.uk/the-survivors-handbook/domestic-abuse-and-your-physical-health/>

BUCKINGHAMSHIRE'S PICTURE OF DOMESTIC ABUSE



The financial costs of DA in Buckinghamshire are estimated to be in excess of

£48 million per annum ¹

These costs fall predominately on the NHS and criminal justice system



In Buckinghamshire from October 2015 to October 2016, there were

8,923 reported incidents of domestic abuse ²



Judge Sheridan pioneered fast tracking justice for victims in Buckinghamshire by reducing arrest to court appearance to less than 14 days



Buckinghamshire IDVA clients have typically called Thames Valley Police between 1 to 5 times prior to referral to Independent Domestic Violence Advocate ³



The prevalence of domestic abuse is one of the county's biggest challenges. It is a risk factor for 62% of children who are subject to a child protection plan ⁴



40%

of Early Help Panel referrals in Buckinghamshire have had a police call out for DA ⁵



During 2016-17 the Family Resilience Service supported **1870** children, who had experience of domestic abuse ⁶



101 women and 104 children and young people used Buckinghamshire refuges over the period 2015/16 ⁷



187 women and 203 children and young people could not be accommodated in refuge in Buckinghamshire due to lack of suitable space In 2015/16 ⁸



DA compared with other types of violent crime: in 2016 High Wycombe had 740 reported incidents of (non DA) violent crime and 1,777 reported incidents of DA ⁹

¹ Buckinghamshire DVA Needs Assessment 2014

² Buckinghamshire Women's Aid Data 2015/16

³ Buckinghamshire Women's Aid Data 2016/17

⁴ Ofsted Report January 2018

⁵ Buckinghamshire Early Help data (2017)

⁶ Buckinghamshire Family Resilience data (2017)

^{7,8&9} Buckinghamshire Women's Aid Data

COST SAVING AND COST AVOIDANCE THROUGH INTERVENTION

Return on investment for domestic abuse intervention services can be calculated using the unit cost database developed by the New Economy project in Greater Manchester⁴, which is also responsible for the development of the nationally acknowledged cost-benefit analysis (CBA) model and is used by HM Treasury.

The return on investment for reducing domestic abuse is £10,738 for every incident prevented. This figure includes the financial cost to the public sector of each incident, including the criminal justice system and health services, of £2,470 (2008/09); the economic cost in terms of sick days taken of £1,692 per incident (2008/09); and the social cost to the individual in terms of harm experienced of £6,795 (2008/09) for each incident. In addition to these, domestic abuse victims and their children are vulnerable to longer term adverse effects. Victims of domestic abuse are significantly more likely to experience mental health issues, which are not calculated in the above costs, and children that witness domestic abuse are more likely to experience it as adults.

STRATEGIC OVERVIEW OF DOMESTIC ABUSE IN BUCKINGHAMSHIRE

Domestic abuse is a significant factor in a large proportion of demand across the public sector. In BCC, for example it is a risk factor in 62% of Bucks children subject to a child protection plan. It also drives other BCC costs such as spot purchasing of Pupil Referral Unit places for excluded children, 20% of which disclose to the PRU that they have been witness to DA.

In addition to being a significant driver of demand for BCC, it is also the second highest demand on Thames Valley Police who describe DA as a “volume crime”. Similarly for the Department of Work & Pensions (Job Centres) a 6 month sample in 2016 of lone parents benefit claimants signing at Chesham shown that 36% had filed a DA complaint with TVP (presumably the reason that led to them living as lone parents claiming benefits).

However strategically safeguarding is everyone’s responsibility and our response to domestic abuse is a multi-agency partnership approach in developing robust arrangements for protecting vulnerable groups. In Buckinghamshire, the Safeguarding Joint Protocol is in place to ensure the following:

- clarity around the roles and responsibilities of the partnerships boards seen in Figure 1 (page 13)
- that work is well co-ordinated with no duplication of effort
- that we achieve more by working together
- that working together has a positive impact on outcomes for Buckinghamshire residents
- that there is effective challenge and scrutiny of safeguarding arrangements across Buckinghamshire⁵.

⁴ Greater Manchester New Economy (2015) ‘Unit Cost Database v1.4’ [Online: <http://neweconomymanchester.com/our-work/research-evaluation-cost-benefit-analysis/cost-benefit-analysis>]

⁵ <http://www.bucks-lscb.org.uk/wp-content/uploads/About%20the%20BSCB/Joint-Protocol-January-2017.pdf>



Figure 1: Boards linking the partnership's wider role around Safeguarding with governance around Domestic Abuse.



BUCKINGHAMSHIRE DOMESTIC ABUSE STRATEGY 2018-2021

Principles & Actions

Strategic Aims: by working in partnership agencies will:

1. Help prevent domestic abuse from happening by raising awareness and challenging attitudes and behaviours which foster or tolerate it.
2. Reduce the impact of domestic abuse on children and adults by intervening early.
3. Provide support to victims.
4. Ensure perpetrators are held to account.
5. Reduce the risk of people becoming victims again.

In working to these strategic aims the following principles will be followed:

1. Commissioning services jointly where this makes sense.
2. Taking account of the views of those supporting victims and those working with perpetrators.
3. Learning from good practice locally, nationally and key lessons from Domestic Homicide Reviews from across Thames Valley.
4. Training our workforce to support all partner agencies that address domestic violence and abuse.
5. Designing services that take account of what those affected by domestic abuse tell us they need including listening to children's perspectives.
6. Sharing information safely, proportionately and appropriately
7. Achieving better value for money in quality and cost.

KEY ACTIONS

The following outlined actions, outcomes and progress indicators will form the starting point for a detailed, refreshed action plan drawn up collaboratively by partners. The action plan will be informed by recent work such as the 2017 Bucks Safeguarding Children's Board domestic abuse audit and will focus on the four broad principles of *Prevent, Support, Protect & Recovery*.

PREVENT

Help prevent domestic abuse from happening by raising awareness and challenging attitudes and behaviours which foster or tolerate it.

What strategic action should we take?

1. Deliver healthy relationships awareness to pupils in primary, secondary and special schools. Establish domestic abuse awareness training and champions in schools among teachers & wider school staff.
2. The Buckinghamshire core IDVA centred service in place across the County is accessible, communicated and understood by all partners and residents.
3. Explore options to widen the support offer by working within Relationship and Sex Education (RSE) and/or Personal Social & Health Education (PSHE) within schools to cover specialist Domestic Violence and Abuse awareness raising.
4. Working with wider community groups and building their awareness around domestic abuse.
5. Roll out *Operation Encompass*⁶ across the county in order to acknowledge and understand the impact of Domestic Abuse as an Adverse Childhood Experience.
6. Continue to facilitate and expand the domestic abuse champion's network.

Key Outcomes & indicators of progress on this measure

1. Young people are able to demonstrate a good understanding of healthy relationships (able to identify risky situations, identify signs of safety and be aware of how to seek out support from professionals).
 - *38 awareness raising sessions delivered in 2018/19 in secondary schools across the county with a target pupil audience of 1800.*
2. Funding identified for awareness raising sessions in schools to continue in 2019/20.
 - *Explore options for including service in recommissioned DVA Integrated contract due to start April 2021.*
3. Increase in numbers of young people reporting domestic abuse/interpersonal abuse via school.
 - *As measured through DVA youth workers referrals for 1:1 support. Capacity 80 referrals in 2018/19.*
4. Via roll out of Operation Encompass reduction in missing, suspended or excluded children at school as domestic abuse incidents are known within schools.
 - *Data from TVP Operation Encompass.*
5. Membership of the Champion's Network is increased.
 - *Increase on 280 members at close of 2017.*
 - *Encourage membership of GPs and School Headteachers.*
6. To disseminate the widest possible learning from DHRs to all partners.
 - *To hold a Thames Valley wide workshop in 2018/2019*
7. Bring together all available data from partners including TVP and Women's Aid to enable meaningful analysis.
 - *DA dataset goes live in 2018/19*

⁶ *Operation Encompass* Is the reporting to schools before the start of the next school day when a child or young person has been involved or exposed to a domestic abuse incident the previous evening. The information is given in strict confidence to a school's Key Adult to enable support to be given dependent on the needs and wishes of the child.

Reduce the impact of domestic abuse on children and adults by intervening early by all agencies working in partnership:

Provide support to victims

Ensure perpetrators are held to account

Reduce the risk of people becoming victims again

What strategic action should we take?

1. Maintain the 2017/18 level of core services, including IDVA provision for adults.
2. Increase provision of specialist DA services for children and young people who experience it within their family environment, or within their own relationships with a view to increasing capacity to work with schools and stability of services.
3. Engage specialist sexual health, substance misuse and mental health services for young people and adults to ensure that every contact counts and opportunities to act are not missed.
4. Provide easily accessible information in order for professionals and victims to be aware of what provision is available.
5. Provide flexibility in eligibility for access to services for victims and their children.

Key Outcomes & indicators of progress on this measure

1. Maintain 2017/18 level of positive outcomes for victims as measured by Women's Aid.
 - *Caseload of 700 victim referrals per annum from 2018/19 reporting reduced risk.*
2. Increase in number of children accessing appropriate support services.
 - *As measured through DVA youth workers referrals for 1:1 support. Capacity 80 referrals 2018/19 utilised.*
3. Increase in victim referrals from under-represented community groups.
 - *As measured via new Black, Minority Ethnic & Refugee (BAMER) service anticipated operational 1/4/18. Capacity anticipated 40 clients per annum to be confirmed via tender being progressed by Office for Police & Crime Commissioner (OPCC) MK Authority.*
4. Increase in referrals into mental health services.
 - *As measured via new Complex Needs Oxford Health service anticipated start 1/4/18. Capacity 8 1:1 + 15 group work tbc.*
 - *Review Complex Needs OPCC funded pilot after 12 months (April 2019).*
5. An effective and well promoted website to share information of services.
 - *Ensuring DVA services are on Family Information Service website for residents and professionals and explore what other websites would be suitable.*

PROTECT

Provide support to victims
Ensure perpetrators are held to account
Reduce the risk of people becoming victims again

What strategic action should we take?

1. All agencies work collaboratively with the police in prosecution efforts including increasing “victimless” prosecutions (prosecutions without the victim being involved in bringing charges).
2. Safety planning for victims of domestic abuse and their children is adopted which identifies trusted people to share concerns with and what actions they should take to keep themselves safe now and if further incidents occurred.
3. Ensure children are protected and ensure professionals providing support understand domestic abuse and local safeguarding procedures.
4. Greater promotion and use of Clare’s Law so potential victims are aware of their partner’s history.
5. Ensure the appropriate services have the capacity to consult survivors prior to release of their perpetrator of their whereabouts and conditions.
6. All agencies work collaboratively to maximise the voice of the child when it comes to contact with perpetrators.
7. All agencies work collaboratively to ensure appropriate referrals are made to perpetrator pilot programmes.

Key Outcomes & indicators of progress on this measure

1. Number and proportion of successful prosecutions.
 - *Thames Valley Police (TVP) quarterly dashboard.*
2. Reduction in reported repeat incidents of abuse.
 - *As measured via TVP data and children’s social care data.*
3. Number of perpetrators identified, referred into behaviour change pilot programmes and successfully completing the programme.
 - *As measured via Positive Relationships Programme pilot.*
4. More victims/families are able to stay within the home if they choose to.
 - *Registered Social Landlord data and appropriate take up of “sanctuary”.*
5. Increase in the number of Clare’s Law requests to Thames Valley Police.
 - *Request to TVP regarding the viability of adding to dashboard.*
6. Survivors report that they have been communicated with prior to perpetrator release.
 - *Investigate the options for data capture via TVP / witness service and Community Rehabilitation Company / probation.*
7. Where TVP use their power of conditional caution in domestic abuse cases, partners ensure that the victim is referred to appropriate support services.
 - *Working with the CJS to, where appropriate, introduce meaningful conditional cautions for DA – with a focus on victim support and perpetrator management.*

RECOVERY

Provide support to victims

Reduce the risk of people becoming victims again

What strategic action should we take?

1. Multi-agency working gives clear guidance and information on the victim's situation so housing authorities can deliver the best response to meet the victim's short term and long term housing needs.
2. We will ensure that where a prosecution has been successful, victims receive appropriate and timely communications prior to offender's release.
3. Networks are developed so that victims can connect with other survivors of domestic abuse for ongoing peer support, to reduce isolation and promote self-esteem.
4. Perpetrators who are committed to changing their abusive behaviour can access ongoing support to address the causal factors of their behaviour.

Key Outcomes & indicators of progress on this measure

1. There is clearer, demonstrable understanding in the processes of how the victim's safety can be secured if she/he does not wish to move away from the area where they lived previously.
2. Probation, Community Rehabilitation Company (CRC), Thames Valley Police and Women's Aid coordinating to ensure communications prior to offender's release.
 - *As measured via Thames Valley Police data and developing DVA dashboard (due 2018).*
3. Ensure Freedom Programme continues to operate and be geographically accessible as a peer support mechanism.
 - *Measure number and location of Freedom Programme courses.*
4. Ensure widest possible referrals into the county's only perpetrator programme and monitoring attendance.
 - *As measured by Positive Relationships Programme (CRC data)*

Contributors

Thames Valley Police
Bucks Safeguarding Adult's Board
Bucks Safeguarding Children's Board
Chiltern & South Bucks District Council
Wycombe District Council
Aylesbury Vale District Council
Aylesbury Women's Aid
Wycombe Women's Aid
National Probation Service
Thames Valley CRC

Buckinghamshire Clinical Commissioning Group
Bucks Health Care
Aylesbury Rape Crisis
One Recovery Bucks
Heart of Bucks
Buckinghamshire County Council
Oxford Health
Action for Children
Victim Support

Glossary

AWA - Aylesbury Women's Aid

BCC - Buckinghamshire County Council

BAMER - Black and Minority Ethnic Refugee

BSAB - Bucks Safeguarding Adult's Board

BSCB - Bucks Safeguarding Children's Board

CJS - Criminal Justice System

CSP - Community Safety Partnership

Champion's Network - A network of professionals in Bucks united in raising awareness of DVA.

CPS - Crown Prosecution Service

DASH - Domestic Abuse, Stalking, Harassment and Honour Based Violence – the name given to the risk assessment and referral used by professionals

DHR - Domestic Homicide Review

DA - Domestic Abuse

DVA - Domestic Violence and Abuse

DVDS/Clare's Law - Information is given to an individual, family member or third party to indicate whether a particular person has a history of domestic abuse and may pose a risk.

DVPO/DVPN - Domestic Violence Protection Orders (DVPOs) can provide immediate protection for a victim in the aftermath of a domestic abuse incident. DVPOs are a civil order that can be applied for by the police and granted by a magistrate.

FP - Freedom Programme – for women to learn more about domestic violence and become empowered to make their own choices

IDVA - Independent Domestic Violence Advocate – provides independent support to medium and high risk victims of domestic abuse

LAGLO - Lesbian and Gay Liaison Officer (at Thames Valley Police)

LGBT - Lesbian, Gay, Bi-Sexual and Transgendered

MARAC - Multi Agency Risk Assessment Conference – for agencies to discuss high risk victims of domestic abuse

Operation Encompass - Is the reporting to schools before the start of the next school day when a child or young person has been involved or exposed to a domestic abuse incident the previous evening. The information is given in strict confidence to a school's Key Adult to enable support to be given dependent on the needs and wishes of the child.

PCC - Police and Crime Commissioner

RSL - Registered Social Landlord

Safelives - A national charity dedicated to ending domestic abuse who support professionals

Serious Case Review (SCR) - A SCR takes place after a child dies or is seriously injured and abuse or neglect is thought to have been involved.

SSBPB - Safer & Stronger Bucks Partnership Board

T&FG - Task & Finish Group

TVP - Thames Valley Police

WWA - Wycombe Women's Aid