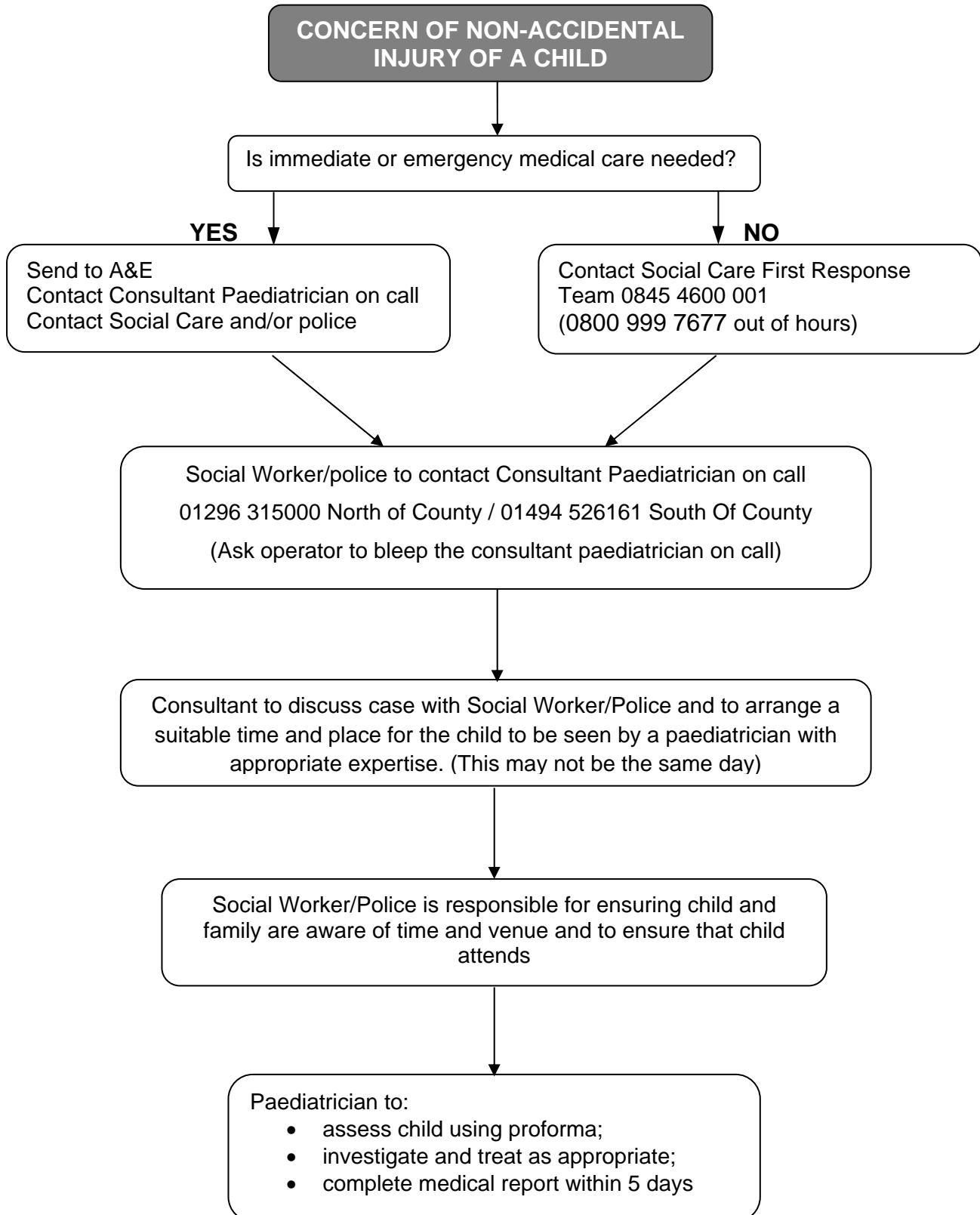
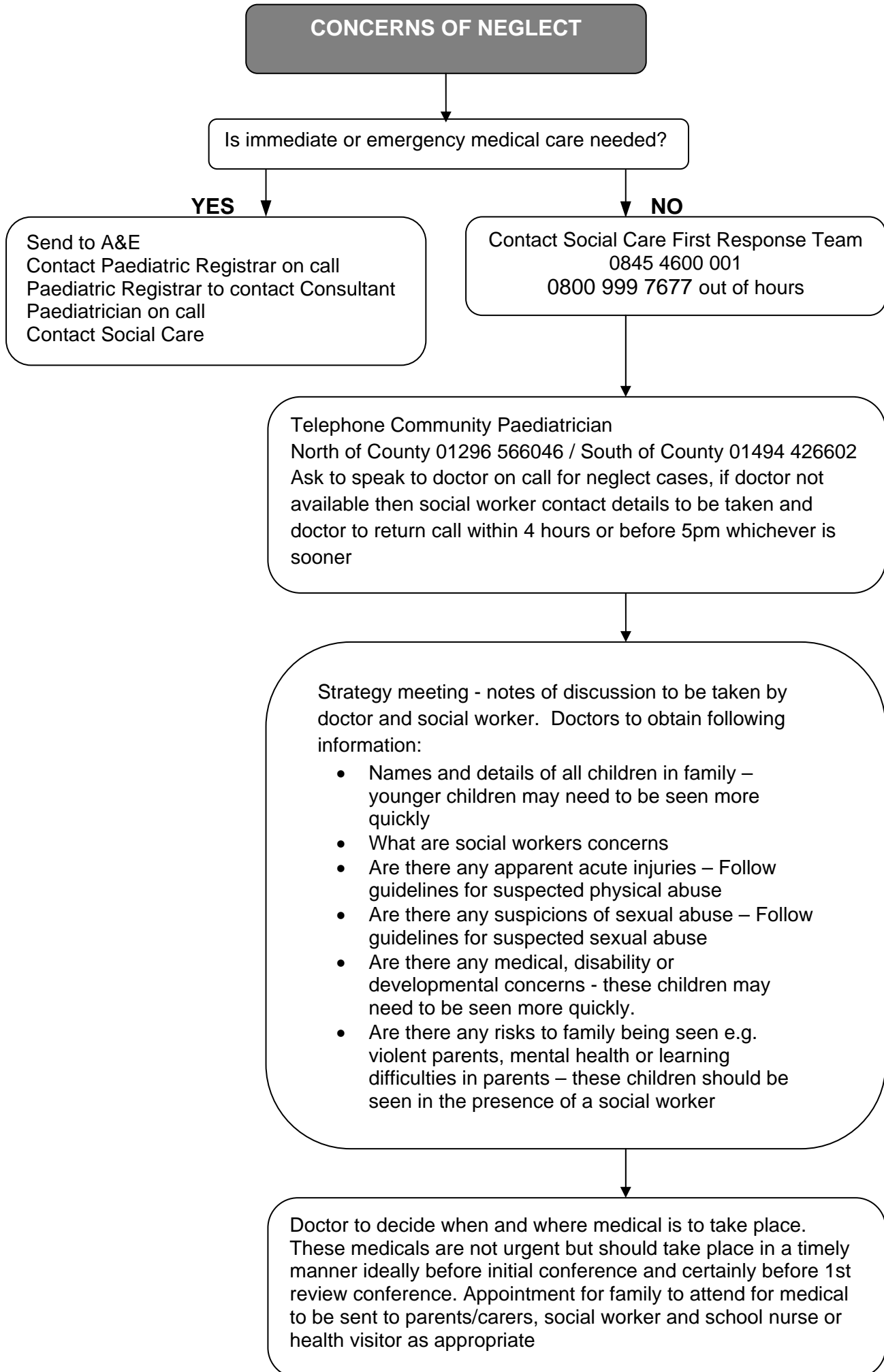


Appendix A
Arrangements for Medical Assessments of Children in Cases of Suspected Abuse
and Neglect: Procedure

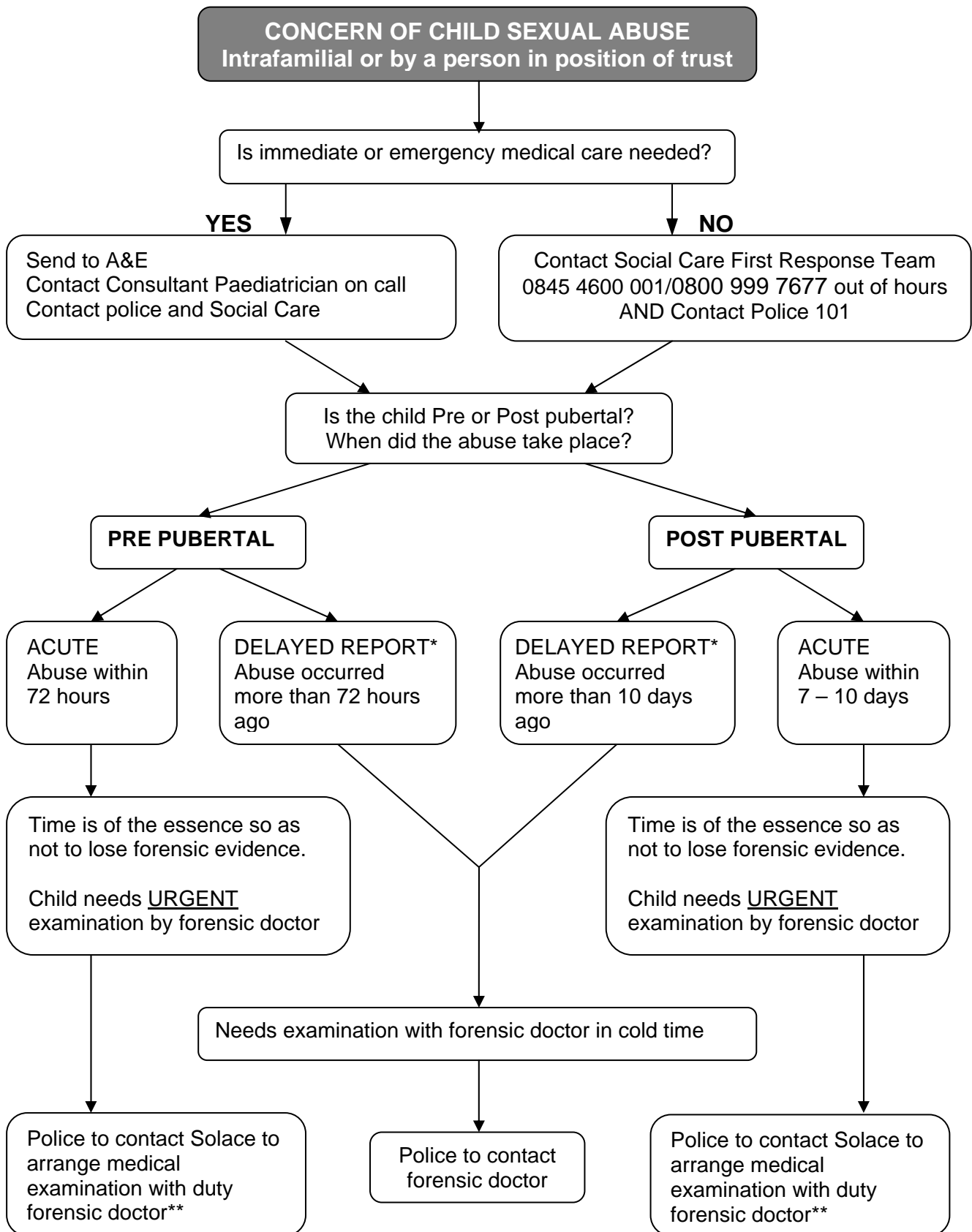
Flow Chart 1: Concern of Non-Accidental Injury of a Child



Flow Chart 2: Concerns of Neglect



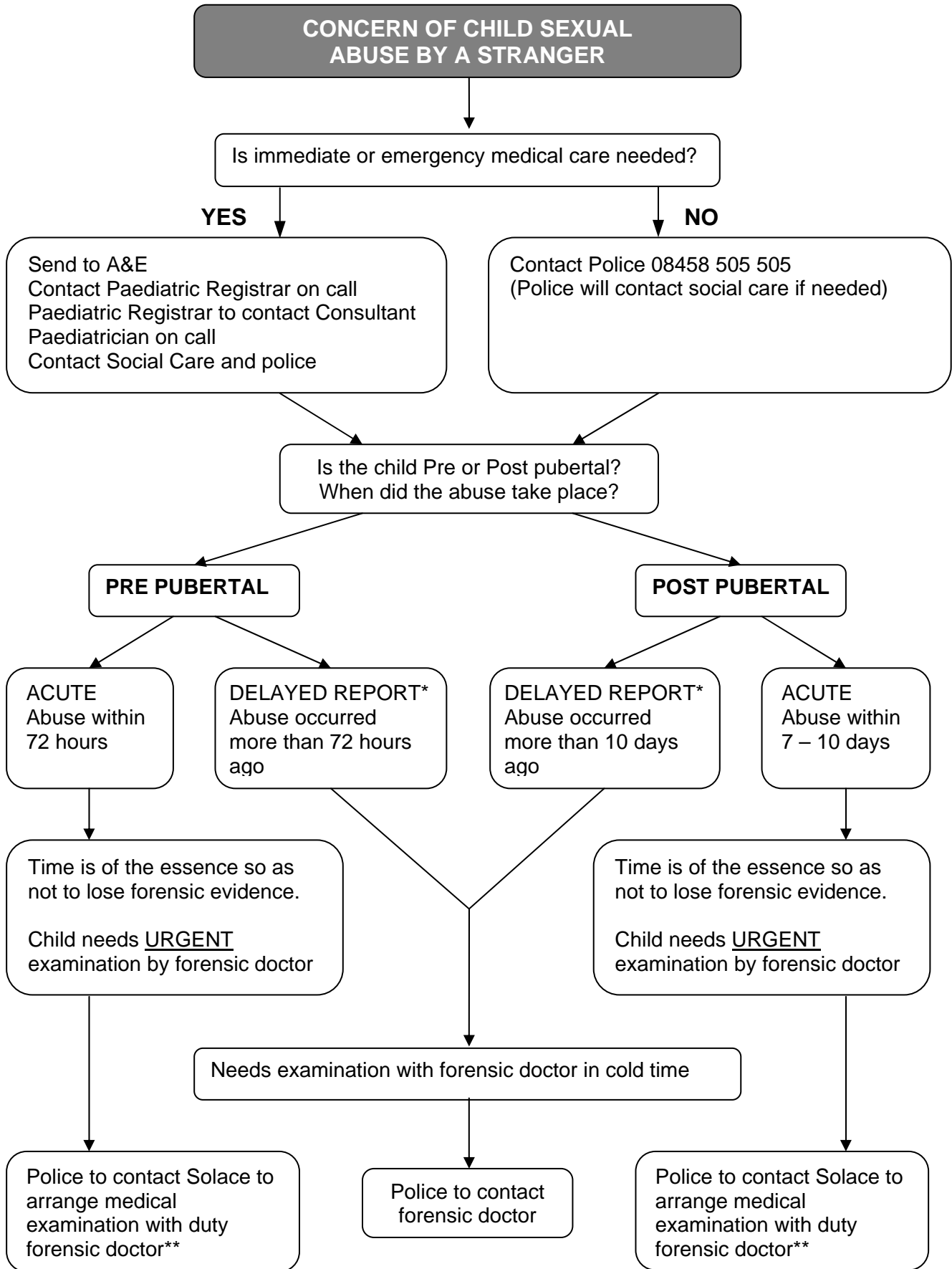
Flow Chart 3: Concern of Child Sexual Abuse (Intrafamilial or by person in position of trust)



*If there is a possibility of injury, which may require treatment and will need to be photo documented then this should revert to the ACUTE box.

**Professionals can call Solace for advice on 0300 130 3036 but must also contact Police and Social Care

Flow Chart 4: Concern of Child Sexual Abuse by a stranger



*If there is a possibility of injury, which may require treatment and will need to be photo documented then this should revert to the ACUTE box.

**Professionals can call Solace for advice on 0300 130 3036 but must also contact Police and Social Care